

## **Appendix 11**

### **Tonbridge & Malling District Youth Information Pack including:**

- a) Youth Provision District Report**
- b) Briefing on Contract Termination – West Kent YMCA**
- c) ‘Smartie’ Map – Demonstrating district total provision (not exhaustive)**
- d) District Summer Programme 2018: Salus will support the existing Summer Programme in Tonbridge and Malling and Tunbridge Wells, taking the opportunity to also promote the work that they do and work alongside EHPS to scope out how best to develop the district offer.**
- e) Open Access Improvement Review scheduled for June 2019**

## Appendix 11.a

### Youth Provision District Report

**By:** Nick Fenton, 0-25 Area Head of Service – West Kent  
Early Help and Preventative Services, Children, Young People and Education,  
Kent County Council

**Subject:** KCC Delivered and Commissioned Youth Provision in Tonbridge and Malling

**Classification:** Unrestricted

---

**Summary:** This report provides an overview of youth provision available in the district of Tonbridge and Malling. This includes provision that is directly delivered or commissioned by Kent County Council (KCC) Early Help and Preventative Services (EHPS).

---

#### 1. KCC Directly Delivered Youth Offer in Tonbridge & Malling

- 1.1. The KCC internal youth offer, delivered by EHPS, in Tonbridge & Malling, consists of a variety of key activities for young people to engage with. These include, but are not limited to, the following:
- i. **Open Access Tonbridge and Open Access Snodland:** Open Access youth work sessions, run in both the Tonbridge Youth Hub and Snodland Youth Hub and Children's centre. Sessions are open to all adolescent young people (12-18). However, we actively target and facilitate attendance of those most at need such as those open to EHPS (Units and Additional), Specialist Children's Services (SCS), and Youth Justice. There are currently two sessions per week in Tonbridge, and one in Snodland.
  - ii. **YOLO, Tonbridge Hub:** We offer a weekly drop in session for young people who are currently NEET or who are at risk of becoming NEET and would like support and guidance as to what is available for them. This includes further education opportunities, linking them to regular work experience opportunities, one to one support via the commissioned CXK service, as well as assistance with CV writing and interview skills.
  - iii. **SNAP & Unity, Tonbridge Hub:** These two targeted youth work sessions are aimed at young people who have special educational needs (SEN) or who have a disability but wish to access a youth centre, and who may otherwise struggle to access a generic youth work session. We aim to build confidence and self-esteem enabling young people to access mainstream youth provision sessions in the future. SNAP is a weekly session and Unity (which is for yp 18+), which runs monthly and ensures there is a clear pathway for the young people up to the age of 25 years.

- iv. **Girls Group, Tonbridge Hub:** A gender specific group which focusses on the specific needs of young women and girls. Sessions focus on developing self-esteem and image, building confidence and understanding the risk of violence against women and girls (VAWG). Sessions aim to ensure that young females have their voice heard and feel confident in doing so. The young females in this group have also been given the opportunity to be Young Leaders within the SNAP sessions.
- v. **Vulnerable/Wellbeing Group, Tonbridge Hub:** This session operates as a closed, targeted, group, offering support for young people who are being worked with at an additional level, and who are currently unable to access other groups that we have running. The group focusses on young people's wellbeing and mental health needs and is open to young people 11-19 (up to 25 with additional needs). This group runs once a fortnight during term time.
- vi. **Junior Group Tonbridge, Tonbridge Hub:** This is an open access group, working with young people that are 8-10 years. For this age group we use a range of team and group work activities, as a way of creating opportunities for growth in confidence that leads to positive relationships with peers. There is also a focus on managing the often-difficult transition into secondary school.
- vii. **Friday Café, Tonbridge Hub:** This cafe is open on a Friday afternoon, and is not only a safe place for young people that finish school early, it is also set up to run Barista training using our Coffee machine. This gives young people an opportunity to not only gain a qualification, but complete volunteering sessions for their Duke of Edinburgh award.
- viii. **Duke of Edinburgh (DofE):** An accredited open award centre to support young people to gain bronze and silver DofE opportunities. Including joint work with Oakley school to support the DofE programme.
- ix. **Peripatetic Detached:** Outreach work which also responds to local need as well as Community Safety Unit (CSU) requests, where the Youth team will support community events during the year that young people attend. e.g. the Tonbridge 'Travelling Fair'.
- x. **Missing Return Interviews:** Missing person return interviews are carried out by EHPS staff, for every young person not open to SCS, to ensure we understand the reason for their missing episode and ensure their safety and wellbeing.
- xi. **Additional Support:** Additional, targeted, support is undertaken by Youth Hub staff, for young people 8-19 (25 where they have additional needs). The focus of this additional support is to offer a one to one intervention carried out with the young people in line with the Signs of Safety methodology, assessment, and plan. Work is carried out over 6-8 weeks and young people are encouraged and supported to access the Tonbridge and Malling Youth offer to provide ongoing support.

- xii. **Y2 Crew:** The Y2 is a long-established summer programme that offers young people from across the Borough a range of fun, educational trips, and activity days. This operates for four weeks of the summer in partnership with the Tonbridge and Malling Borough council. This includes half term activities.
- xiii. **Residential Work:** The youth hub offers residential work with a focus of meeting needs while building resilience through outdoor education. In the past year the Hub has delivered one-night camping activities for young people who require some additional support and are a part of the SNAP group.
- xiv. **Schools Work:** The youth hub teams will deliver programmes in school. This is to offer a 6-week programme that supports young people that have been identified as at possible NEET at Year 11. This is delivered through raising aspirations and creating opportunities to explore a range of options to support Young People that are identified as possible NEET come Year 11. We also work with schools to promote Kent Youth County Councils elections.
- xv. **LGBTQ:** This is a targeted group, supporting young people from LGBTQ community. This is a safe space, where they can talk to others and get support from a range of professional, such as Sexual Health. Young people during this session can express themselves and build strategies and resilience.
- xvi. **YAPS:** Young active parents, is a group currently running weekly session in two locations and after 12 weeks families are eligible for free driving lessons and free crèche. They complete elements of work that is governed by Rathbones, which is a commissioned service that works in Tonbridge and Malling Under care to learn scheme to support, Volunteers, education, employment and training (VEET). We currently engage 84.2% of young parents, which is above the Kent average 75.1%
- xvii. **Children in Care Activity Days:** Activity days offered to Children in Care (CIC) at risk of placement breakdown to provide respite. Like the Sense of Belonging residential, these activity days are aimed at giving CIC something constructive and positive to do, while developing their skills and providing day respite for their careers.
- xviii. **Sense of Belonging:** Programme offering residential weekends of respite to Children in Care at risk of placement breakdown.

## 2. KCC Commissioned Youth Offer in Tonbridge and Malling and Tunbridge Wells

- 1.1. There are 12 Youth contracts across Kent, delivered by 7 providers. Project Salus have recently been awarded the contract for Tonbridge and Malling and Tunbridge Wells following negotiations with the previous provider that ended in contract termination. The remaining life of the contract is 40 months and the contract started on the 1<sup>st</sup> August 2018.

- 1.2. The EHPS Youth Hub Delivery Managers will be working with the new provider to establish a programme of delivery that meets the needs of the two districts. Due to this being a largely school-based model, this will be in place from Early September 2018.

### **3. Governance**

- 1.1. The overarching responsibility of the district YAG is to ensure that there is a good understanding of the youth offer within their respective districts and that appropriate developments are taken forward. This enables it to remain consistently of a high standard, from their perspective, for children and young people (aged 8 – 19 years and up to 25 with additional needs), living in the district. The YAG is open to both district and county Members. YAGs receive a district-level data pack with analysed performance, to inform discussions.

- 1.2. YAG meetings are convened on a quarterly basis. Councillor Peter Homewood is the chair of the Tonbridge and Malling YAG.

### **2. Partnership Working in Tonbridge and Malling**

- 2.1. The EHPS Youth Hub Delivery Manager attends the weekly CSU meeting. This looks at a range of vulnerable families and information is shared regarding young people and reported issues of ASB. This creates opportunities for young people and families to access universal, additional, or intensive family support. This also acts as an opportunity to assess young people networks and support partners in informal education interventions with young people identified.

- 2.2. Staff within our Open Access Youth team work in partnership with Tonbridge and Malling Borough Council to offer a four-week summer programme to engage targeted young people in positive activities which offer a range of experiences that can build growth, self-esteem and create new friendships. This is known locally as Y2 crew.

- 2.3. The Schools Link Worker role is carried out by EHPS and is in place to support schools with accessing universal, additional, and intensive family support. It also consists of regular meetings of advice and support.

- 2.4. The Youth Hub Delivery Manager works closely with the early help district manager to gather information and intelligence regarding vulnerable young people. This information is shared, at numerous meetings including adolescent risk meetings, various complex strategy meetings.

- 2.5. Youth Hub staff support Voluntary Youth Provision as required, including Olympia Boxing and drop in sessions with the youth engagement officer for Kent police.

- 2.6. Youth Justice Team run the Youth Justice Panels and other meetings regarding young people from the hub.

- 2.7. Senior Early Help Workers attend Secondary School LIFT meetings on a termly basis to discuss the needs of young people and the opportunities for young people to access universal, additional, or intensive family support.

- 2.8. The EHPS team attend Locality based partnership meetings in Trench, Snodland and East Malling.
- 2.9. A range of parenting courses are run in partnership. Cygnet is run with (STLS) specialist teaching and learning service. Understanding Your Teenager course, this is run by the Youth Hub staff in partnership with Adult education. Understanding You, Understanding Your Child (UYUYC). is run by the EHPS unit staff
- 2.10. Early Help Unit Staff have delivered training to schools regarding interventions to use with young people including NVR and managing challenging behaviour. The units have completed social skills groups within schools with key young people identified through EHN and staff role modelled these interventions to schools.

## Appendix 11.b

### Briefing on Contract Termination – West Kent YMCA

From: Stuart Collins Interim Director Early Help and Preventative Services

To: Cllr Roger Gough, Cllr Mike Hill, Cllr Shellina Prendergast, Cllr Trudy Dean, Cllr Michael Payne, Cllr Peter Homewood, Cllr Sarah Hamilton, Cllr Paul Barrington-King, Cllr Sean Holden, Cllr James McInroy, Cllr Peter Oakford, Cllr Catherine Rankin, Cllr Matthew Balfour, Cllr Sarah Hohler, Cllr Richard Long, and Cllr Harry Rankin

Subject: **West Kent YMCA – (Tunbridge Wells and Tonbridge and Malling Youth Provider) Contract Termination**

Classification:

#### Summary:

- West Kent YMCA are currently subject to a 5-year contract with KCC to deliver universal Youth Provision in the districts of Tunbridge Wells and Tonbridge and Malling (let by KCC on 1<sup>st</sup> December 2016, following a competitive process)
- On 3<sup>rd</sup> April 2018 West Kent YMCA gave KCC 3-months' notice of their intention to cease delivery of their provision in Tunbridge Wells and Tonbridge and Malling.
- The targets in the contract have been subject to scrutiny and negotiated change throughout the lifetime of the contract and are intended to compliment and improve the whole district offer in conjunction with the Early Help inhouse provision under the scrutiny of both the Tunbridge Wells and Tonbridge and Malling Youth Advisory Groups (YAGs).
- As with all Early Help contracts a robust contract monitoring process is in place for our commissioned youth services and West Kent YMCA have found the new higher levels of performance management and scrutiny challenging. As a result, in spite of 6-months of support and negotiation they have decided to withdraw as a provider. One of the key considerations in their performance was that they had only achieved 19% of their agreed annual reach target for Tunbridge Wells and 22.4% of their agreed annual target for Tonbridge and Malling.
- The remaining 10 district contracts are provided by 8 other providers.
- To ensure that there is not a significant gap in provision for the two districts, KCC procurement team have advised that we can undertake a snap procurement, by approaching each of the remaining providers to take over provision subject to expressions of interest, current performance, TUPE regulations and in the case of more than one provider expressing an interest, an interview.

## 1. Introduction

- 1.1. There are 12 Youth contracts across Kent delivered by 9 providers. Of the 12 contracts, eight are performing well against targets and three are working with KCC to bring about the necessary improvements. West Kent YMCA felt that they were no longer able to work to an improvement plan to and have decided to withdraw from the contract.
- 1.2. To monitor contracts against KPIs providers are asked to use the eStart system to capture reach, registration and activity data. Internal services and external providers share the same IT system and commissioning officers undertake a contract monitoring process which includes regular meetings with providers. This information is then cross-referenced with the qualitative data gathered from observations and feedback from partners.

- 1.3. At point of mobilisation each of the providers were subject to monthly monitoring meetings with KCC Commissioning Officers, Early Help District Managers and Youth Hub Delivery Managers. When performance is good these meetings move to bi-monthly and then quarterly (however a monthly desk-based process still occurs).
- 1.4. West Kent YMCA have been subject to monthly monitoring since contract inception due to continued poor performance against KPIs There are a number of standard key performance indicators that are used for contract monitoring, however, the overarching KPI is in relation to the number of young people that have been registered (also known as affiliated) to the service. The original target at point of contract commencement was 25% of the population of young people aged 8-19. This target was described as aspirational and is shared geographically and divided between the in house and commissioned provision.
- 1.5. During the first year of provision in order to achieve a green rating for this contract providers, have to reach 80% of the identified target. In year two of the contract RAG ratings have been brought in line with in house provision with 65% achieving a green rating.
- 1.6. Thirteen months into contract current performance for West Kent YMCA stands at 19% of registration target for their reach target for Tunbridge Wells and 22.4% of their target for Tonbridge and Malling (targets are set out in Fig. 1). Despite this poor performance and high levels of support from commissioning officers, West Kent YMCA have not been able to put in place a sufficient improvement plan to address this shortfall.

**Fig 1**

	Tonbridge and Malling	Tunbridge Wells	Statistical Neighbour (a)	Statistical Neighbour (b)
Financial Envelope per annum	£83,000.00	£76,000.00	£136,948.00	£75,000.00
Total costs for 13 months provision	£89,916.67	£82,333.33	£148,360.33	£81,250.00
Target No of Registered young people *	1967	1795	1963	1689
Total No of Registered young People	363	386	1208	1363
Unit Cost to date	£ 247.70	£ 213.30	£ 122.81	£ 59.61
Target Unit cost to date	£ 45.71	£ 45.87	£ 75.58	£ 48.11
*if contract variation is accepted				

## 2. Timeline

- 2.1. West Kent YMCA advised us that during the first four months of the programme of delivery, they were unable to maintain staffing levels and found themselves without a consistent workforce. This has impacted on their ability to deliver services in line with their contract. Conversations were held between the providers and the commissioning team earlier in the year to propose a reduction in targets for a portion of the financial envelope for this period being returned. West Kent YMCA were unable to return any funding and therefore targets have remained the same.
- 2.2. West Kent YMCA were placed on a second improvement plan in August 2017. This process had a limited impact on performance and KCC issued a contract warning to West Kent YMCA in January 2018



- 2.3. The financial envelope and associated unit costs for this service is demonstrated above in Fig 1. This table also demonstrates two districts that have similar targets to West Kent and are of a similar size organizationally and despite earlier challenges in their contract have been able to move towards a position of good performance.
- 2.4. A contract variation was given to all youth providers in December 2017. West Kent YMCA have informed commissioning officers that they will not sign the contract variance as the word 'aspirational' as been removed from the target numbers set out in schedule 14 (all other providers excluding 1 have signed this variation, it is important to note here that this other provider has also given notice on their contract)
- 2.5. Whilst the word 'aspirational' was removed from targets, on consultation with the youth providers the overarching district target (that had been reduced to 15% of the population of children and young people) was shared proportionally in line with the service provision levels. There was also a consistency in the way that performance was rated against RAG ratings.
- 2.6. The original contract set out the need for flexibility regarding this contract and other providers have met this well. The two providers with the poorest performance West Kent YMCA and one other resisted the contract change and both rejected the validity of the contract warning.

### **3. Recent Events**

- 3.1. West Kent YMCA were invited to a meeting with the lead member for CYPE to discuss the contract variation and the impact of not signing on the 20<sup>th</sup> March. During this meeting West Kent YMCA requested a deadline of 3<sup>rd</sup> April regarding a decision to hand back the contract.
- 3.2. On the 3<sup>rd</sup> April West Kent YMCA served formal notice regarding their contract termination.
- 3.3. During the Meeting on the 20<sup>th</sup> March a representative from West Kent YMCA highlighted that they have struggled as an organisation to meet the needs associated with the contract as they have been wedded to their original bid
- 3.4. HR and procurement colleagues have been consulted regarding the implications of this contract termination.
- 3.5. As commissioners, KCC are keen to retain the model of local delivery partners working with KCC to deliver a wholistic offer and as such are currently not minded bringing the provision in house, but rather to offer the opportunity to one of the existing providers through a 'snap procurement' to run the service in the two districts.
- 3.6. A 'snap' procurement would only be open to our existing suppliers and could occur on the grounds that we fully explored the market only 18 months ago and there were no other tenders to come forward for the two districts.
- 3.7. The market has not moved on sufficiently for any other bidders to come into the market place, therefor it would not be in anyone's interest to run a full procurement exercise to the open market.
- 3.8. Amendments to the ruling regarding the limiting of providers to two districts can also be made. This was brought in to ensure that no single supplier would hold most of the county provision. By removing this rule, KCC can reasonably argue that there is still a good spread of provider It would also give all our existing providers an equal chance in application.

3.9. In order to undertake a snap procurement KCC would still need a 3-4-month lead in time. West Kent YMCA have suggested they would be open to working with KCC for longer than the 3-month notice period in order to safeguard the continuance of provision for service users and support staff being TUPE'd.

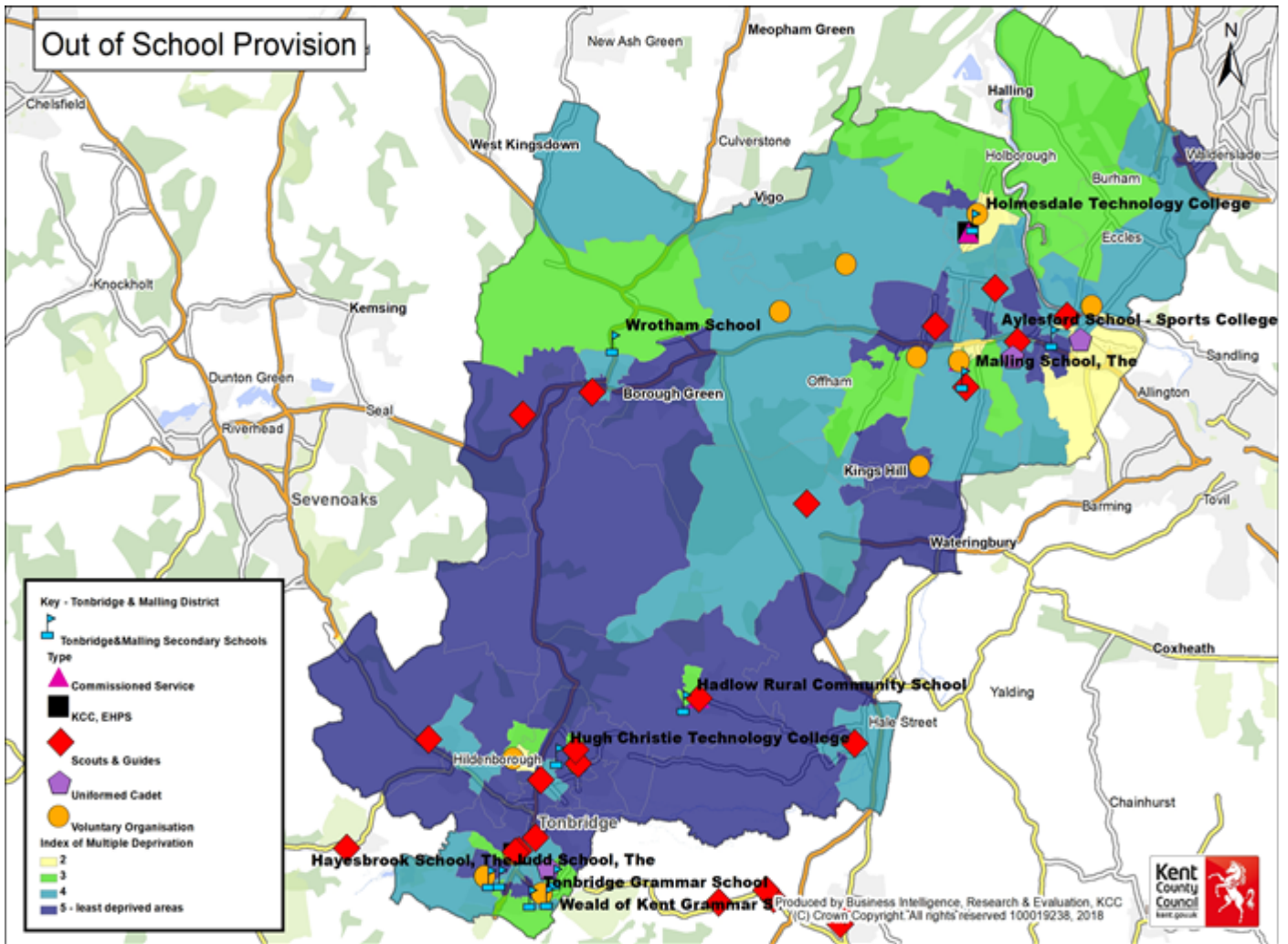
#### **4. Conclusion**

4.1. KCC can go out with a Snap procurement to the existing providers. This process should be able to be completed within a three-month time frame and have little impact to current service users in the districts.

4.2. West Kent YMCA are well connected locally and have been effective lobbyists in the past and are therefore are likely to raise their concerns with both Tunbridge Wells District council and Tonbridge and Malling Borough Council and KCC Local and Cabinet Members including the lead member for CYPE.

Appendix 11.c

Tonbridge and Malling District 'Smartie' Map – Demonstrating district total provision



Tonbridge and Malling Summer Programme 2018



Y2 Crew Summer Scheme is aimed at young people aged between 8 – 18 years. The scheme provides a wide range of activities with something to suit all ages and abilities so why not come and experience a summer with a difference!

Y2 Crew is run in partnership between Tonbridge and Malling Early Help & Preventative Services and Tonbridge & Malling Borough Council with funding from Parish Councils and a Kent County Council Combined Member Grant.

#### Parent feedback

We aim to provide the best possible care for young people on our Y2 Crew programme which is why we value your comments and feedback and use it to develop and improve our services even further. Once the Y2 Crew programme has finished you will receive an email with a link to our survey or alternatively you can pick one up from a member of staff during the scheme.



**For Y2 Crew activities please contact**

Email: [leisure.services@tmbc.gov.uk](mailto:leisure.services@tmbc.gov.uk)

Tel: 01732 876166

**For youth club/youth work enquiries please contact**

Early Help & Preventative Service on 03000 416456

[www.kent.gov.uk/youngpeople](http://www.kent.gov.uk/youngpeople)

# 2018 Summer Scheme

**Y2 Crew is packed with a wide variety of activities, ranging from Fishing to a Dover Castle trip, for young people aged 8 to 18 years.**

The programme operates weekdays from Monday 30 July to Friday 24 August 2018.

Each activity is led by qualified instructors and each trip is run by qualified Youth Workers all of whom are vetted by the Disclosure and Barring Service where appropriate and trained in basic first aid including the use of an epipen.

There will be a small charge for the trips (see individual activities for details). Full details on how to pay the fee and register are provided on page 10 of this brochure. A number of financial concessions are available to encourage as many young people as possible to take part.

The Borough Council operates a Leisure Pass scheme for residents in receipt of certain benefits. For more information please see our website [www.tmbc.gov.uk/leisurepass](http://www.tmbc.gov.uk/leisurepass)

If you wish to apply for a Leisure Pass please contact Leisure Services on 01732 876166

## Pick up/Drop off

There will be three main pick up and drop off points for most of the trips.

### Main Pick up/Drop off points

- Snodland Youth and Children's Centre, Snodland
- Hadlow Village Hall
- Longmead Sportsground Car Park, Tonbridge

Parents/guardians will be asked to select a Pick up/Drop off point on the application form. Should you wish to change a pick up/drop off point please advise the youth workers on the day.

Please note that times given are approximate as we cannot predict traffic and weather conditions. However if we are to be very late back we will contact all parents/guardians to let them know. If you are concerned about a late return please contact the youth worker in charge: Ellen Shaw on 07595 089546.

**If you are having difficulty reading this brochure and would like the information in another format, please call Leisure Services on 01732 876166 or email [leisure.services@tmbc.gov.uk](mailto:leisure.services@tmbc.gov.uk)**



# Programme and pick up/drop off times 2018

## Week 1 (30 July - 3 August)

### Dover Castle (8-18 years)

Discover this medieval castle and fortress by roaming through the secret war time tunnels, seeing where famous kings and queens once walked and inspecting the guns that saved us from a French invasion.

Date: Tues 31 July Time: 11am-5pm Place: Dover

Tonbridge		Hadlow		Snodland	
Pick up	Return	Pick up	Return	Pick up	Return
8:45am	6:45pm	9:15am	6:30pm	9:45am	6:00pm

### Community Fun Day (8-12 years)

Hook a Duck or Splat the Rat, Wheelbarrow or 3-legged Race, fun and games for everyone.

Date: Wed 1 Aug Time: 12:30am-3:30pm Place: East Malling Centre

Tonbridge		Hadlow		Snodland	
Pick up	Return	Pick up	Return	Pick up	Return
11:30am	4:30pm	11:45am	4:15pm	12:15pm	3:45pm

## Week 2 (6 August - 10 August)

### Den Building (8-12 years)

How resourceful are you and can you build a den from scratch using only natural materials?

Date: Tues 7 Aug Time: 10am-1pm Place: Haysden Country Park

Tonbridge		Hadlow		Snodland	
Pick up	Return	Pick up	Return	Pick up	Return
9:45am	1:15pm	9:30am	1:30pm	9:00am	2:00pm

### Kent Fire and Rescue Day (14-18 years)

Play interactive state-of-the-art games, see a live rescue demonstration and investigate the scene of a crash. Also learn what to do in a fire and how to rescue someone in trouble in the water.

Date: Wed 8 Aug Time: 10am-4pm Place: Rochester

Tonbridge		Hadlow		Snodland	
Pick up	Return	Pick up	Return	Pick up	Return
8:45am	5:15pm	9:00am	5:00pm	9:30am	4:30pm

### Lifeguard Taster Day (16+ years)

Could you save someone from drowning? Do you know how to resuscitate someone? Would you like the chance of a job? Come along and find out what's involved.

Date: Wed 8 Aug Time: 10am-4pm Place: Larkfield Leisure Centre

### Fishing (8-18 years)

Learn to fish like a professional. All equipment and expert tuition provided. Certificates for everyone taking part.

Date: Thurs 9 Aug Time: 9am-12noon (8-12 yrs) & 1pm-4pm (13-18 yrs) Place: Hadlow

8-12 yrs	Tonbridge		Hadlow		Snodland	
	Pick up	Return	Pick up	Return	Pick up	Return
	8:30am	12:30pm	8:50am	12:15pm	8:30am	12:30pm

13-18 yrs	Tonbridge		Hadlow		Snodland	
	Pick up	Return	Pick up	Return	Pick up	Return
	12:30pm	4:30pm	12:50pm	4:15pm	12:30pm	4:30pm

### Crafty Monkeys (8-13 years)

Challenge yourself to make something unique to keep or give to someone special. Tuition by a professional artist.

Date: Wed 8 Aug Time: 10am-2pm Place: Larkfield Village Hall

Tonbridge		Hadlow		Snodland	
Pick up	Return	Pick up	Return	Pick up	Return
9:00am	3:00pm	9:15am	2:45pm	9:45am	2:15pm



# Programme and pick up/drop off times 2018

## Week 3 (13 -17 August)

### Bike Day (8-18 years)

Do you know how to fix your bike? How are your bike skills? Come along and learn something new. Own bike and helmet required.

Date: Tues 14 Aug	Time: 9:30am-12:30pm (8-12 yrs) 1:30pm-4:30pm (13-18 yrs)	Place: Kings Hill Sports Park
-------------------	--	-------------------------------

### Royal Observatory & Cutty Sark (8-18 years)

Imagine you are sailing the high seas on the beautiful clipper Cutty Sark, then take in the wonders of outer space at the Royal Observatory and Planetarium.

Date: Wed 15 Aug	Time: 12pm-6pm	Place: London
------------------	----------------	---------------

Tonbridge		Hadlow		Snodland	
Pick up	Return	Pick up	Return	Pick up	Return
9:45am	8:00pm	10:00am	7:45pm	10:30am	7:15pm

### Animal Encounters & Escape Room fun (8-18 years)

Come meet, touch and feed a range of small animals, reptiles and insects, then we will hotfoot it to the Hop Farm to see if you and your friends can use your skills and quick thinking to get out of the Escape Room.

Date: Thurs 16 Aug	Time: 10:30am-3pm	Place: East Peckham & Hop Farm
--------------------	-------------------	--------------------------------

Tonbridge		Hadlow		Snodland	
Pick up	Return	Pick up	Return	Pick up	Return
9:45am	3:35pm	10:00am	3:20pm	9:45am	3:45pm

## Week 4 (14 - 18 August)

### Bike Day (8-18 years)

Do you know how to fix your bike? How are your bike skills? Come along and learn something new. Own bike and helmet required.

Date: Tues 21 Aug	Time: 9:30am-12:30pm (8-12 yrs) 1:30pm-4:30pm (13-18 yrs)	Place: Tonbridge
-------------------	--	------------------

### Swattenden Adventure Centre (8-18 years)

Get ready to test your nerve and steady hands with archery, climbing, stepping stones, giant swing, spiders web rope course, photo safari and walking the bridge.

Date: Wed 22 Aug	Time: 9:30am-3:30pm	Place: Cranbrook
------------------	---------------------	------------------

Tonbridge		Hadlow		Snodland	
Pick up	Return	Pick up	Return	Pick up	Return
8:45am	4:00pm	8:30am	4:15pm	8:00am	4:45pm

### Dreamland (8-18 years)

Experience this vintage amusement park on the Kent coast with rides for all ages (but no high adrenalin rides). Entry to include unlimited rides, roller disco and street entertainment.

Date: Thurs 23 Aug	Time: 11am-5pm	Place: Margate
--------------------	----------------	----------------

Tonbridge		Hadlow		Snodland	
Pick up	Return	Pick up	Return	Pick up	Return
8:00am	7:15pm	8:30am	7:00pm	9:15am	6:30pm



## Tonbridge & Malling Early Help & Preventative Services

### Youth Programme

KCC offer open access services for children and young people aged 0-19 years (0-25 years for young people with SEND).

Programmes run throughout the year with invite only and open access sessions.

Extra activities are available during school holidays and are advertised via our programmes and on Facebook.

As well as these sessions at our Youth Hub and Children's Centres we run parenting and adult education courses.

Please take a look and ensure that you like us on Facebook (Tonbridge Youth Hub or Tonbridge and Malling Children's Centres)

Any changes and updates will be posted on our Facebook pages, including any last minute unavoidable cancellations.



Please contact us via Facebook, email or phone:

**Tonbridge Youth Hub 03000 416456**

**Tonbridge & Malling Children's Centres 03000 418008**  
or [tmcc@kent.gov.uk](mailto:tmcc@kent.gov.uk)

**Early Help 03000 421576**

or [EarlyHelpNotificationT&M@kent.gov.uk](mailto:EarlyHelpNotificationT&M@kent.gov.uk)



### Tonbridge Lions Club

Tonbridge Lions Club is delighted to help and support young people in several ways:-

- Purchase of equipment for youth clubs
- Donation of trophies and prizes for competitions
- Assistance with community projects
- Grants to individuals and groups who are undertaking projects abroad
- Young Ambassador Award, an award for work being done by young people in their communities

For more information on any of the above please contact  
John Chapman on 01732 359040







# Tonbridge Events 2018

**Tonbridge Food Festival**  
26-27 May, Tonbridge Castle

**Tonbridge Summer Carnival**  
17 June, Tonbridge High Street /  
Castle

**Tonbridge Castle Music Weekend**  
6-8 July, Tonbridge Castle

**Changeling Theatre – Measure  
For Measure**  
13 July, Tonbridge Castle

**Tonbridge Lions Car Tour**  
15 July, Upper Castle Field Carpark

**Illyria – Pirates of Penzance**  
17 July, Tonbridge Castle

**Luna Cinema**  
20-22 July, Tonbridge Castle

**Jon Hamilton Big Band**  
29 July, Tonbridge Castle

**Illyria – Merchant of Venice**  
7 August, Tonbridge Castle

**Second Wind Jazz Band**  
5 August, Tonbridge Castle

**Invicta Jazz Orchestra**  
12 August, Tonbridge Castle

**Illyria – Hound of the  
Baskervilles**  
28 August, Tonbridge Castle

**Sevenoaks and Tonbridge  
Concert Band**  
2 September, Tonbridge Castle

**Medieval Fair and Heritage  
Weekend**  
8-9 September, Tonbridge Castle

**Tonbridge Town Teams  
Dragon Boat Race**  
9 September, River Medway /  
Watergate

**Home and Garden Show**  
6-7 October, Tonbridge Castle

For more details on the above  
visit [www.tmbc.gov.uk](http://www.tmbc.gov.uk)



[www.tmbc.gov.uk](http://www.tmbc.gov.uk)

## Project Salus Summer Mobilisation and Summer Activity Timeline

### Tunbridge Wells and Tonbridge and Malling

30 <sup>th</sup> July	Salus Attend Cranbrook school fun day (note this is prior to official start of the contract)
1 <sup>st</sup> August	Scoping outreach visit Tonbridge and Malling
3 <sup>rd</sup> August	Scoping outreach Tunbridge Wells
7 <sup>th</sup> August	scoping outreach paddock wood
8 <sup>th</sup> August	Scoping and outreach Cranbrook
10 <sup>th</sup> August	Attended early help fun day Tunbridge Wells
10 <sup>th</sup> August	Interviews held for Youth Worker posts
14 <sup>th</sup> August	Interview held for youth work manager post
15 <sup>th</sup> August	Advertised remaining posts and discussion with Helen Cook about contingencies
16 <sup>th</sup> August	Meeting to discuss contingencies to address shortfall in recruitment and plan for mobilisation meeting.
20 <sup>th</sup> August	Scoping and outreach Tunbridge Wells
21 <sup>st</sup> August	Tonbridge and Malling mobilisation meeting
22 <sup>nd</sup> August	Attending Temple Grove holiday fun time session
23 <sup>rd</sup> August	Scoping and outreach Tonbridge and Malling
28 <sup>th</sup> August	August Summer Salus to attend activity session in Cranbrook
29 <sup>th</sup> August	August Salus to attend Holiday fun time activity in Tonbridge wells
30 <sup>th</sup> August	Tonbridge Wells Mobilisation meeting